

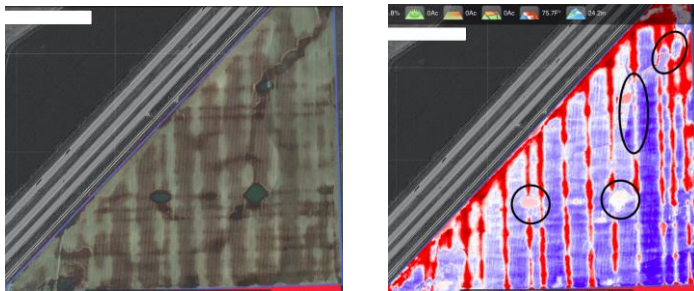
Identify tile and drainage problems to pinpoint underlying issues and drive long-term value.

FINDING TILE LINES

Issues with tile line performance will typically show up in a circular shape centered on the tile line in the area with the problem (examples below).

- Use the RGB or Thermal lens and switch to thumbnail view.
- Tile will show up in RGB as thin, light lines and in Thermal as thin, red lines, indicating they are hotter or drier.
 - In RGB the area with the issue will show up as darker soil.
 - Under the Thermal lens, tile line issues will show up as hotter or colder than the tile line, depending on the ambient temperature/sun exposure.
 - Hotter/Higher Thermal values indicate ponding water exposed to the sun and heated beyond soil temperature.
 - When ambient temperatures are cooler, failing tile may create ponding areas cooler than the rest of the field.

PRO-TIP: Tile lines—and any issues—will be especially visible after rainfall. Where they are performing well, you will see the straight-line patterns. Drainage issues will show up as a circular shape and variance in soil color or temperature.



Later in the season, these areas will likely be visible on the VEG layer (RowTracer). The field below shows the progression of a field with a damaged tile main. In this field, the grower applied urea which resulted in thick swaths of nutrient deficient corn in the south end of the field due to the excess moisture which caused volatilization.

