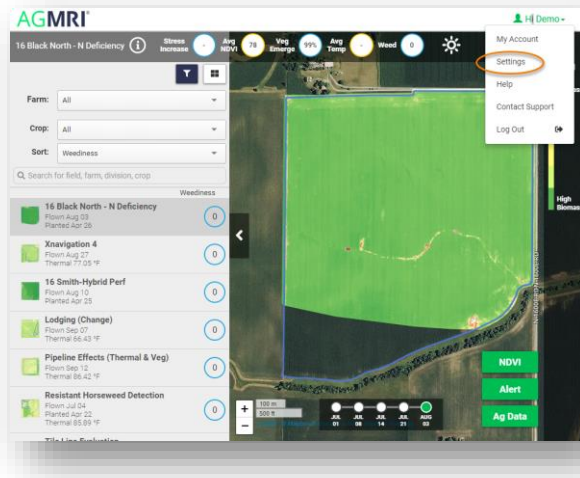


Uploading Additional Files

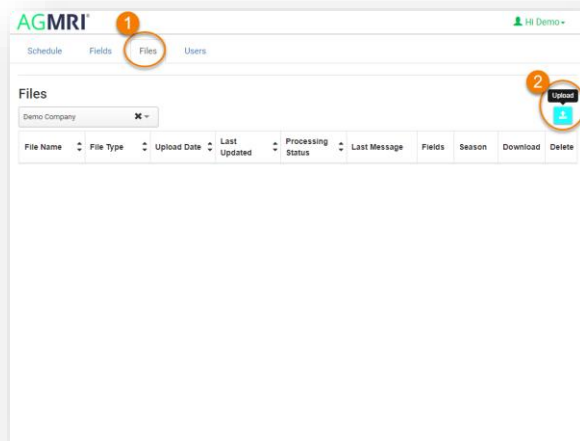
AgMRI can ingest planter files, spray maps, harvest maps and more so you can view your maps alongside AgMRI's analysis to gain an even deeper understanding of what is happening in your fields.

Note: If you use the MyJohnDeere Operations Center, you can connect it to AgMRI to automatically import these maps. Contact your Account Manager to learn more.

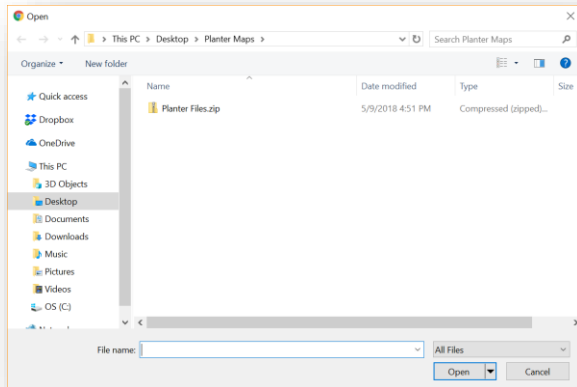
- From the home screen, navigate to Settings.



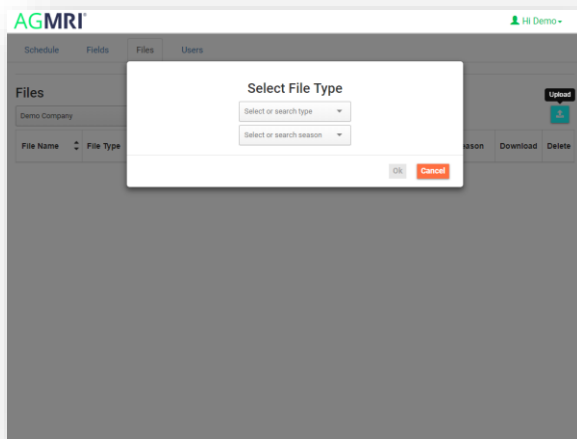
- In Settings, navigate to the Files tab (1) and click the Upload icon (2).



- Locate and select the appropriate file(s) on your computer and click Open.



- Choose the appropriate file type (harvest map, planter data, boundary shapefile, soil type, liquid application, tillage or topo) and season, then click OK.



That's it! Your supplementary information is now loaded to AgMRI.

Questions? Contact our Customer Success Team!

Contact your account manager, or a member of the Customer Success Team at customersuccess@intelinair.com or 833-My-AgMRI (833-692-4674).